



Planbureau voor de Leefomgeving

Circular economy outline

Monitoring the transition

Maikel Kishna

25-09-2020



Overview

- > Dutch CE-policy
- > Measuring progress towards CE
- > Circular firms in the Netherlands

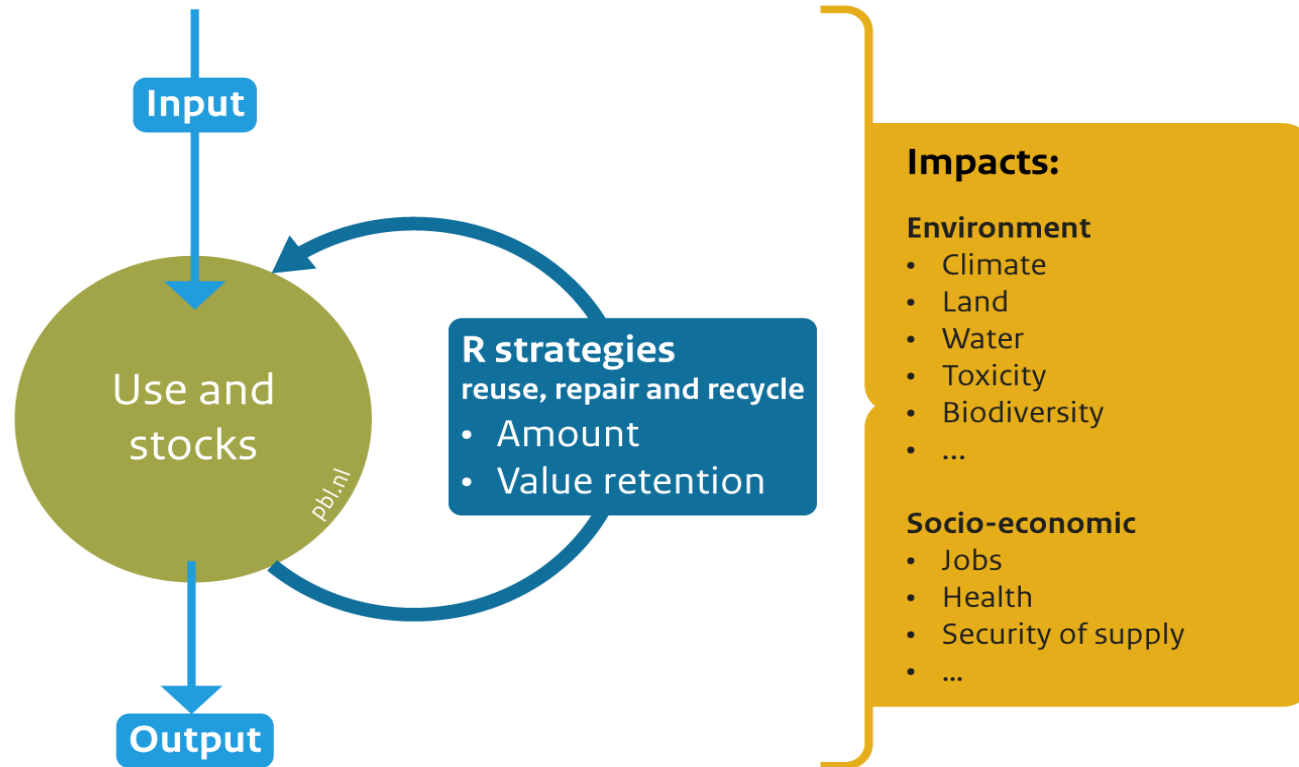


CE policy in the Netherlands

- > (2014 – VANG)
- > 2016 – Government-wide programme
- > 2017 – Raw materials agreement
- > 2018 – Transition agenda's
- > 2018 – Letter to parliament
- > 2019 – Implementation programme

Measuring the progress towards a CE

General framework for circular-economy targets and indicators



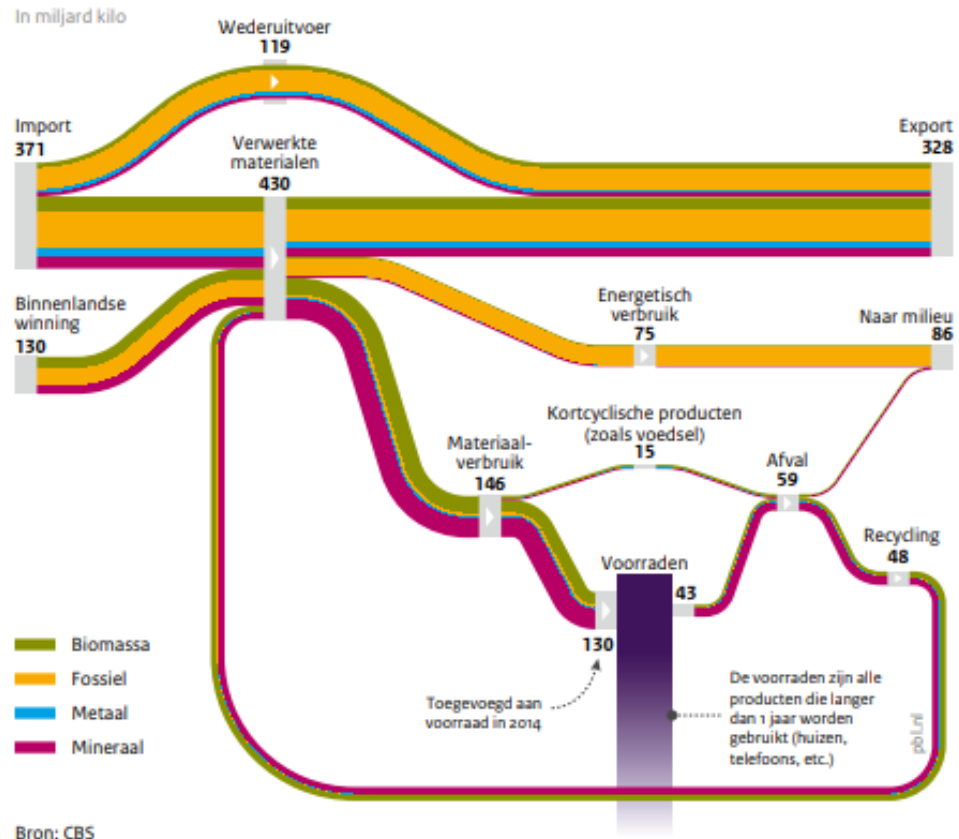
> Absolute reduction target

- Resource demand
- Environmental effects
- Supply risks
- Economic benefits

Source: PBL

Dutch resource use and effects

Materiaalstromen Nederlandse economie 2014



- > DMI/DMC/RMI/RMC
- > CO2
- > Land use
- > Jobs
- > Added value
- > Waste targets
- > No acceleration towards CE

Measuring the transition process

- > The transition process takes place before a shift in resource use/effects is visible

Onderdelen van een succesvolle circulaire economie transitie

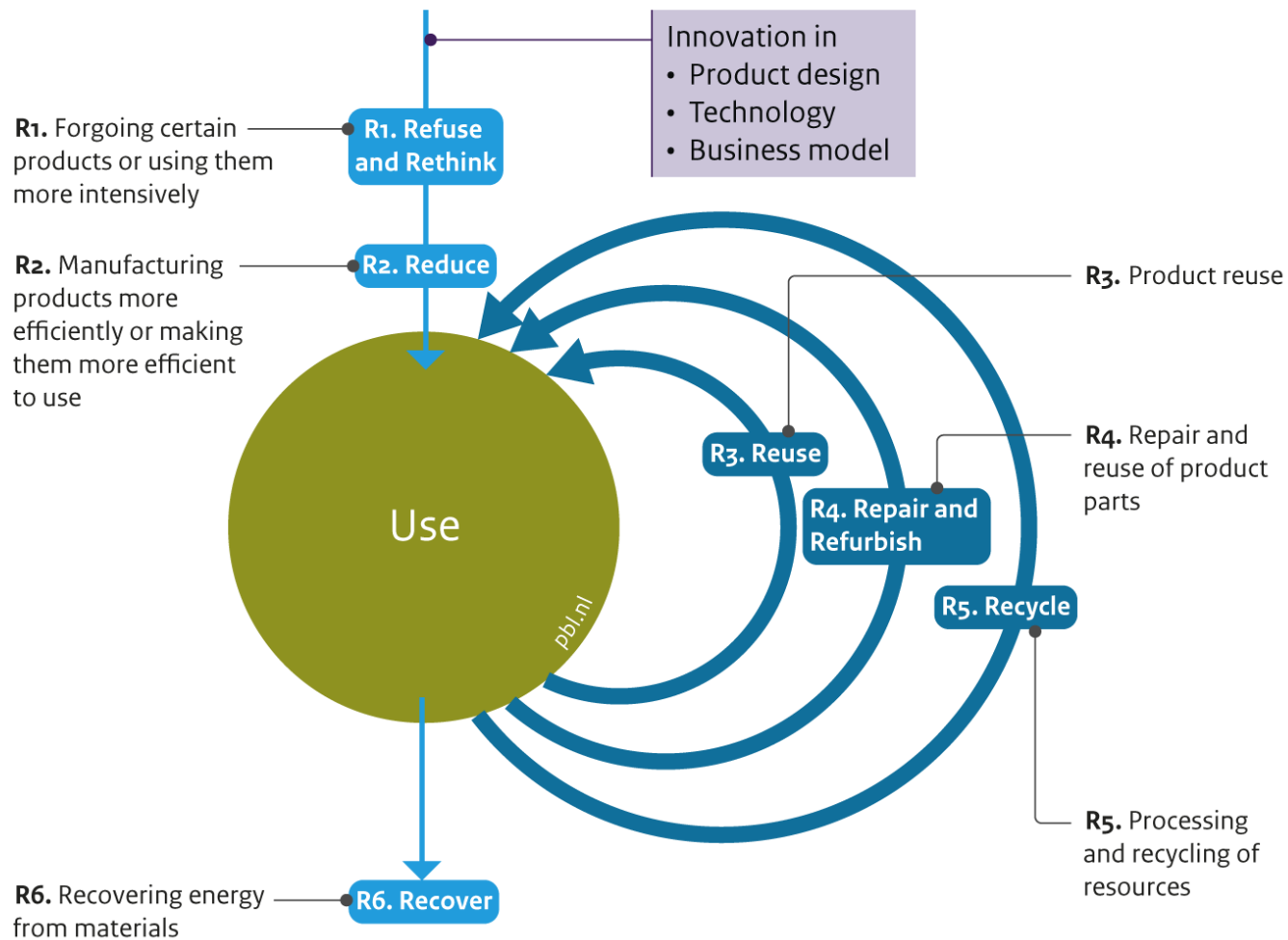


Bron: PBL 2013; op basis van Hekkert 2007; Suurs 2009



Circular firms

R-ladder of circularity strategies

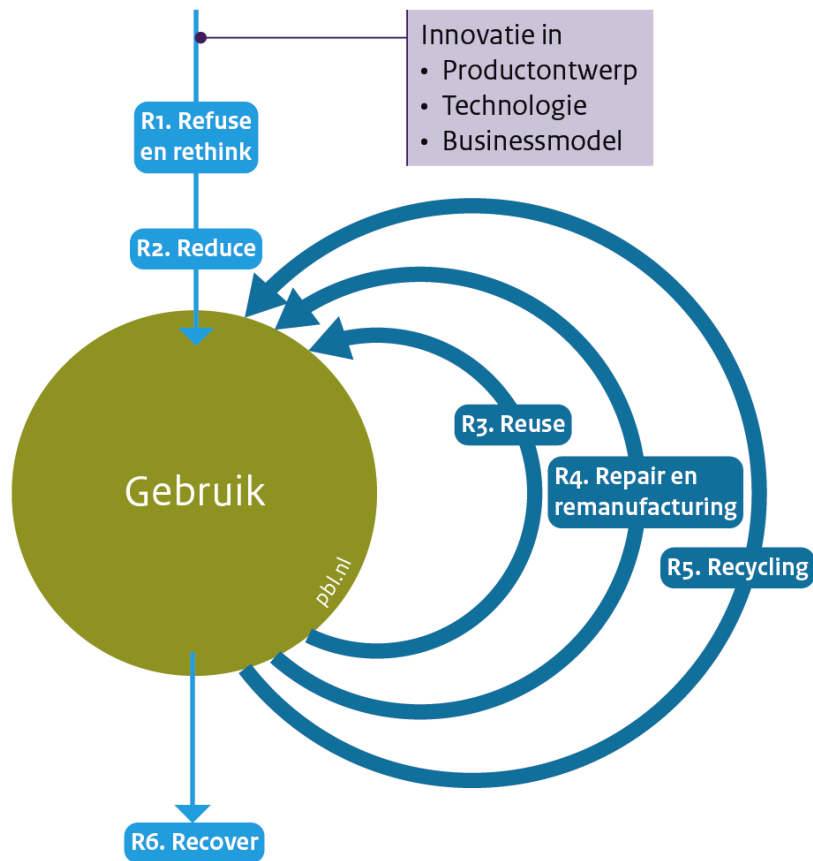


Source: PBL



Circular economy in the Netherlands

R-ladder met strategieën van circulariteit



Reduce

Bron: PBL



Reuse



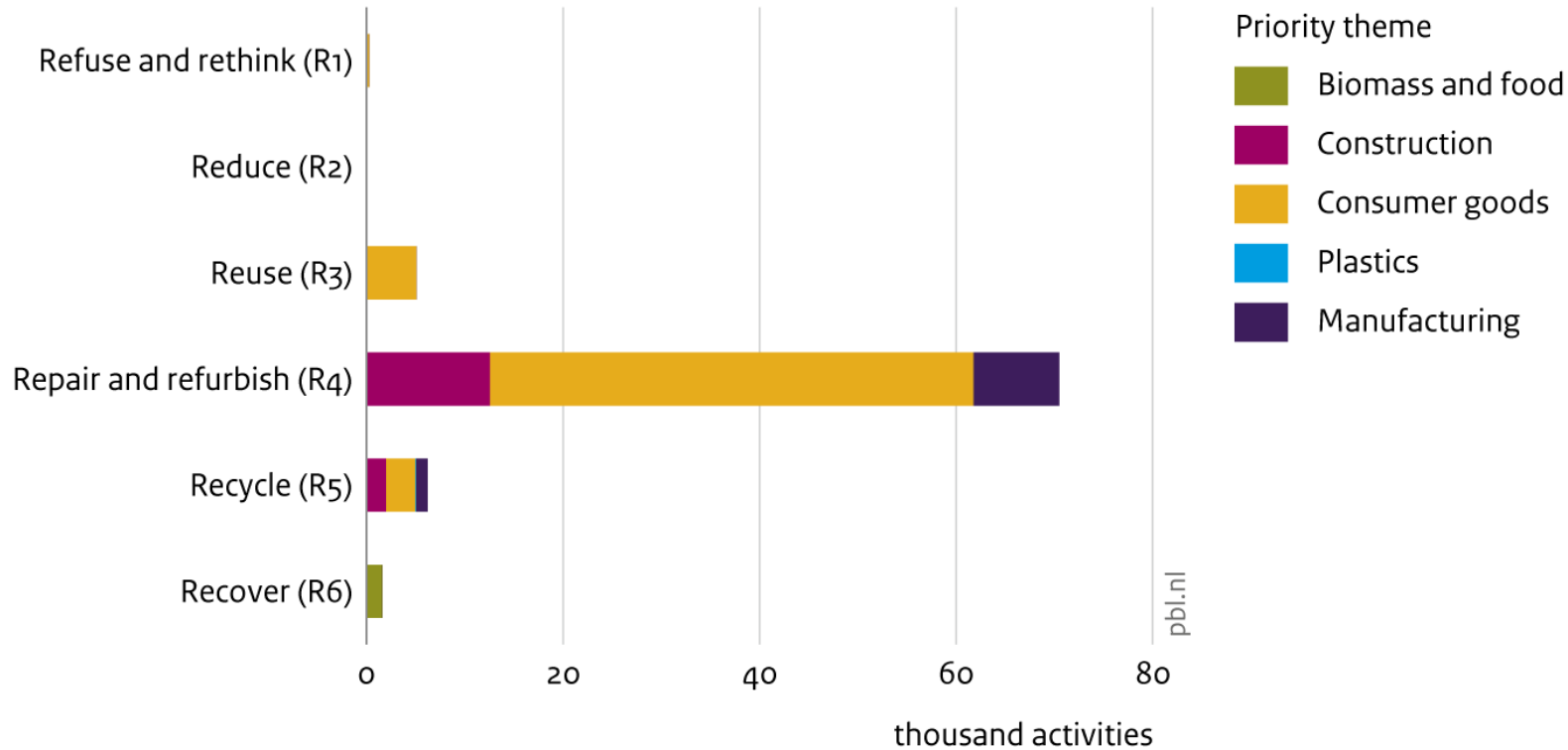
Repair/Revision



Recycle

Circular activities are common

Circular activities per R-strategy, 2018



Source: PBL

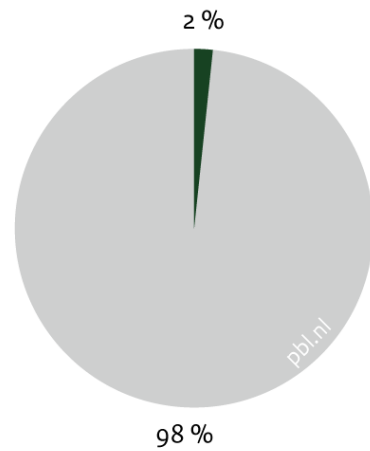




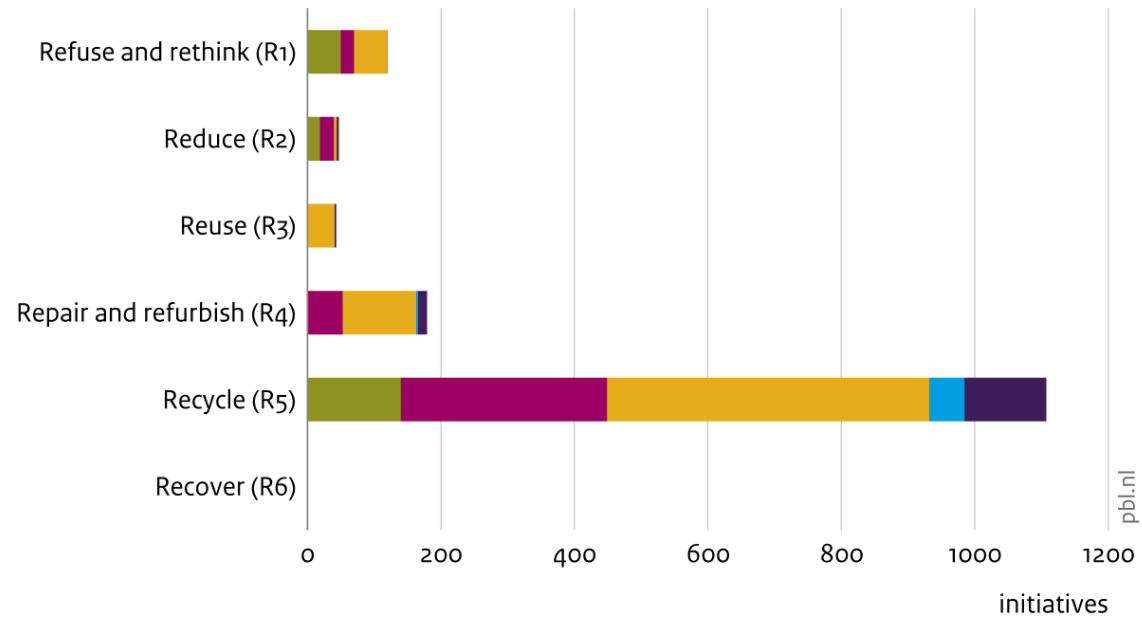
Innovative initiatives

Innovative circular initiatives, 2018

Share



Number of initiatives per R-strategy, 2018



■ Innovative initiatives
■ Common circular activities

Priority theme
■ Biomass and food ■ Plastics
■ Construction ■ Manufacturing
■ Consumer goods

Source: PBL



Thank you!



www.pbl.nl



maikel.Kishna@pbl.nl